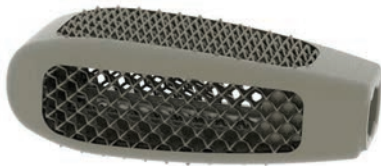


Bone InGrowth Cages

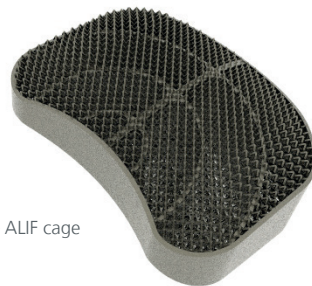
3D printed titanium cage family



ELBA – TLIF cage



PIANOSA – PLIF cage



ALICUDI – ALIF cage



STROMBOLI – DLIF cage

System

The cutting-edge titanium net structure in combination with the geometry enhancing elasticity and stability, facilitate the new bone formation and offer an excellent platform for bone in- and on-growth. This addresses the benefits of a dynamic fusion process, following Wolff's law.

The design allows the largest volume of new bone colonization and promotes blood cell circulation to speed up the bone remodeling process.

- Manufactured with Selective Laser Melting (SLM) technology
- Bone InGrowth Technology®
- Universal Filling System
- Open implants structure allows free flow of bone cells
- High porous surface supports settlement and growth of new osteogenic cells formations
- Each cage available in different footprints, heights and angles



TSUNAMI MEDICAL SRL
Via XXV Aprile n. 22
41037 Mirandola (MO) Italy
Tel. +39.0535.38397
Fax. +39.0535.38399
www.tsunamimedical.it

**Over a Century
of Innovation**

Ulrich
medical

Distributed by:

Ulrich GmbH & Co. KG | Buchbrunnenweg 12 | 89081 Ulm | Germany
Phone: +49 (0)731 9654-0 | Fax: +49 (0)731 9654-2705
spine@ulrichmedical.com | www.ulrichmedical.com